

PIPELAYER SYSTEM

LOAD MONITORING INDICATOR

- Reduce job-site incidents by providing operator with accurate load information.
- Prevent equipment tipping and rollovers.
- Improve quality of work by eliminating stress on critical welds.
- Reduce costs due to equipment downtime and pipe damage.
- Recognized globally as an industry best practice.



Distributed Exclusively by:

**PipeLine
Machinery**



Your Global Partner for Pipeline Solutions

SAFETY AT WORK.

Provide your operators with the precise load management information they need to get the job done safely and efficiently.

JOB-SITE SAFETY

Increase operator efficiency by arming them with precise information. The load on the hook is displayed along with overhang, machine slope and machine capacity. Overload warning occurs before the machine tips.



SYSTEM FEATURES

The Pipelayer System is engineered specifically for pipelayer equipment. System consists of a load pin, boom angle indicator, two-axis slope indicator, and a large, easy to read operator display panel. The load chart information is programmed to the specific model of the pipelayer.

Additional features:

- Meets or exceeds all pipeline industry standards.
- Field proven.
- Durable, solid-state construction eliminates maintenance and frequent re-calibration.
- Built to withstand extreme weather conditions and corrosion proof.
- Wireless components provide easy installation and calibration.
- Backed by one of the best product service and support programs in the industry.
- Optional anti-2-block.



QUALITY AT WORK.

A high quality of work is important to everyone – pipeline owner, contractor and operator alike. The Pipelayer System load monitoring gives your operator the information needed to produce superior work.

PIPELINE INTEGRITY

Monitoring the load limit will help eliminate costs and equipment downtime due to replacing damaged pipe caused by dropping and over-bending. Prevent high stress on welding at pipe joints and rough handling during the lowering in process.

EQUIPMENT SMART

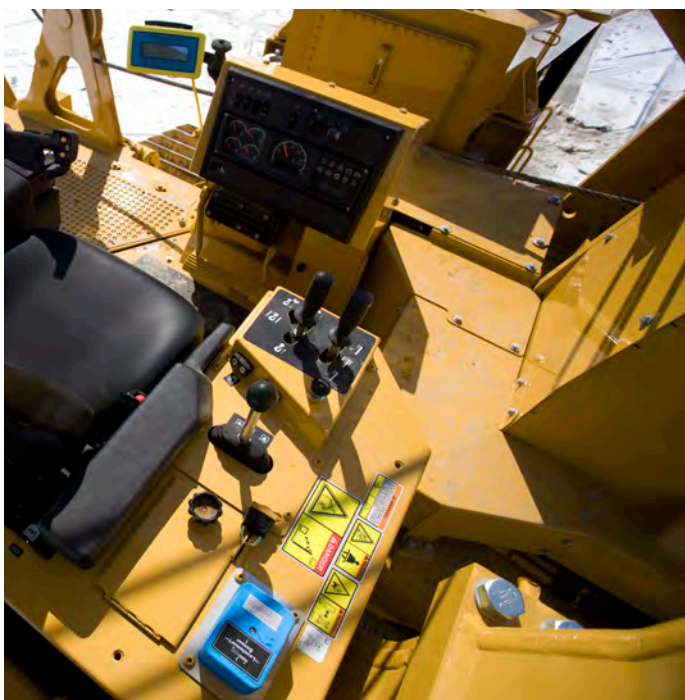
Equipment damage causes unnecessary downtime, can become a safety hazard to the operator and those working in and around the machine and ultimately affects your bottom line.

The Pipelayer System can be easily adapted to most equipment and is built with *quality you can depend on.*



PIPELAYER SYSTEM INSTALLATION & SUPPORT

- The Pipelayer system is provided with complete instructions and mounting hardware for quick attachment. No wires, cables or special tools needed.
- Designed specifically for pipelayers. Purpose-built.



- Installs on any pipelayer new or old.
- Meet industry safety standards hassle-free.
- Wireless technology reduces downtime. Most service issues can be handled with a single phone call and resolved within 24-48 hours if replacement or exchange components are required.

Distributed Exclusively by:

**PipeLine
Machinery**



USA: 713-939-0007
Canada: 780-377-0336
www.plmcat.com

Manufactured by:



Cranesmart Systems, Inc.
Phone: 780-437-2986
www.cranesmart.com

Your Global Partner for Pipeline Solutions